



Full Subject-Based Banding (Full SBB)

What is Full Subject-Based Banding?

- Full Subject-Based Banding (Full SBB) is part of MOE's ongoing efforts to **nurture the joy of learning** and **develop multiple pathways** to cater to the different strengths and interests of our students.
- With Full SBB, we are moving towards a secondary school education where **students learn each subject at the level that best caters to their overall strengths, interests and learning needs.**

Rationale of Full SBB

Full SBB aims for students to:



Have **greater ownership of their learning** according to their strengths, interests and learning needs



Develop a **growth mindset and an intrinsic motivation** to learn for life



Have **more opportunities to interact with friends** of different backgrounds, strengths and interests

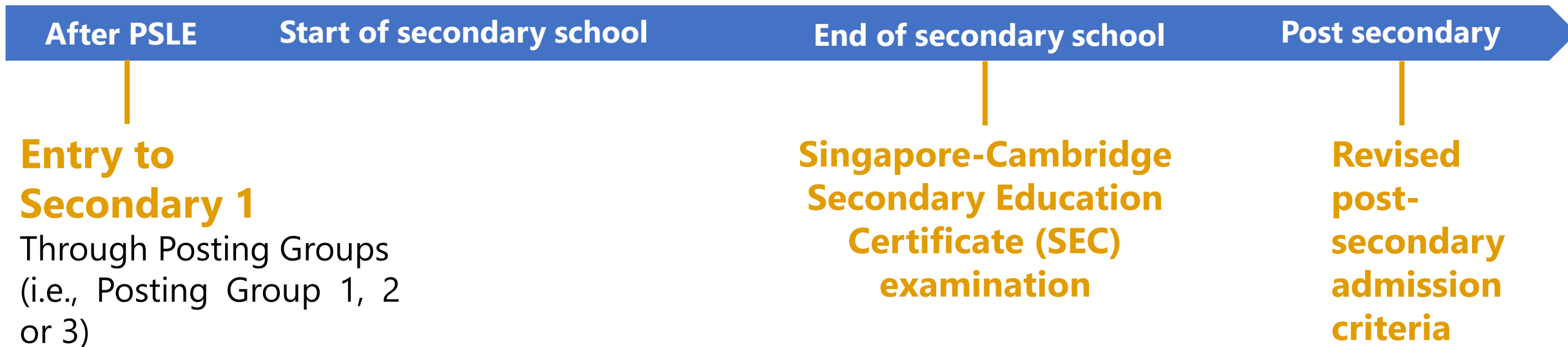


Have **more options for post-secondary pathways**, while ensuring they have strong fundamentals and can thrive in their chosen pathway

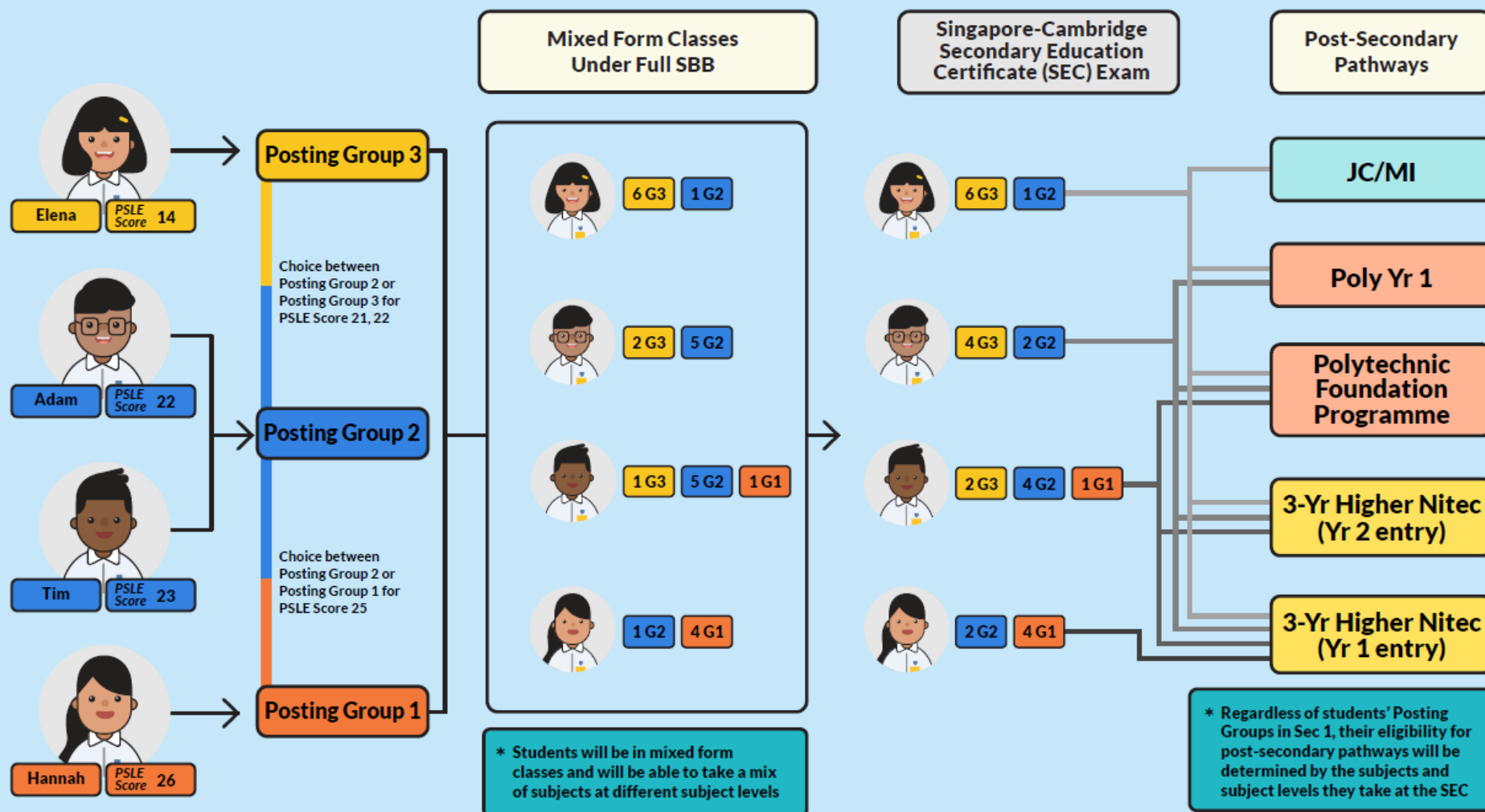
Secondary school experience under Full SBB

Secondary school experience

1. Mixed form classes upon entering secondary school
2. Common curriculum subjects at lower secondary
3. Subjects to be offered at G1, G2 or G3, mapped from the standards of the N(T), N(A) and Express respectively
4. Greater flexibility to offer subjects at various subject levels
5. Shift away from stream-based subject offerings



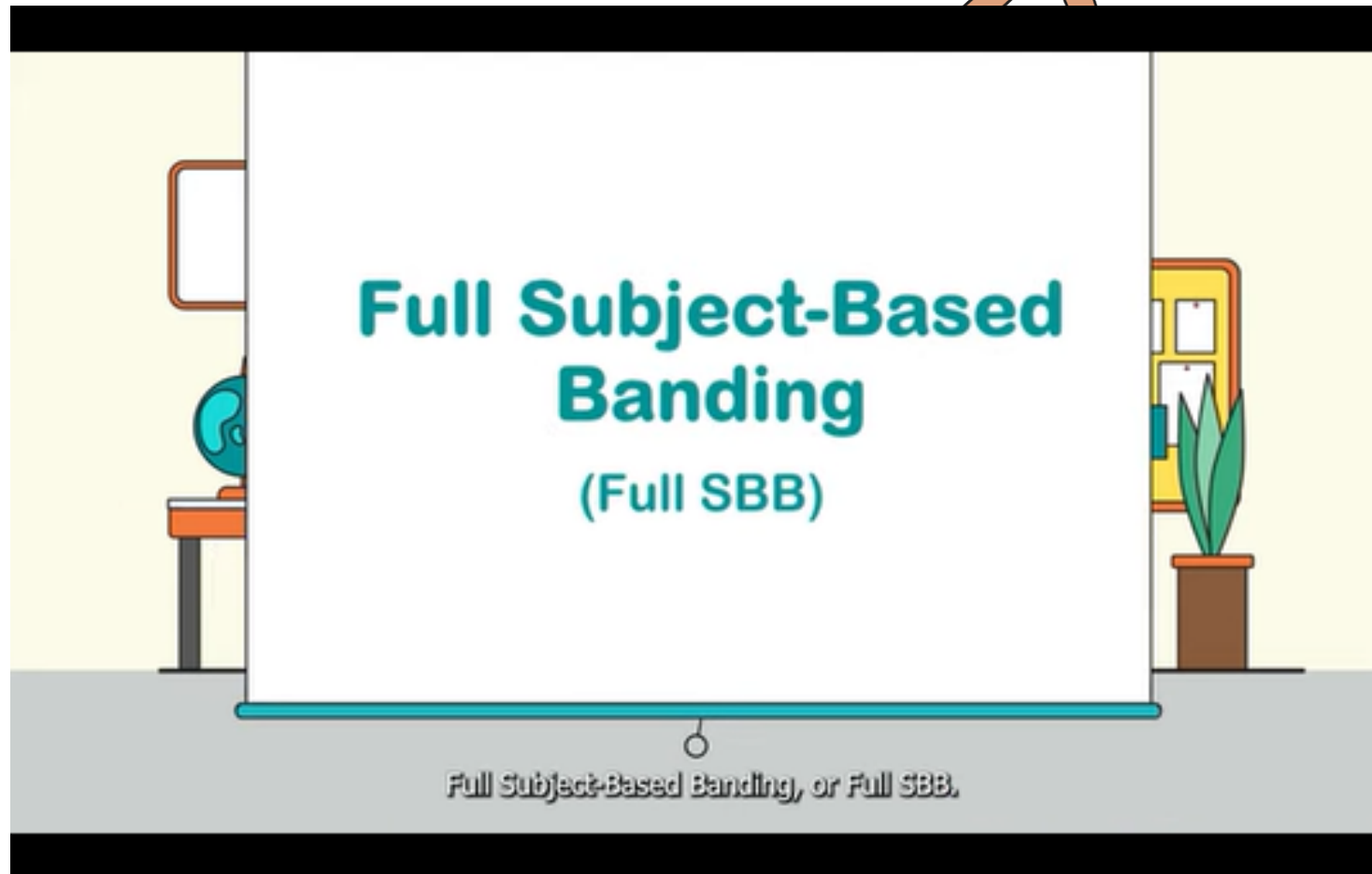
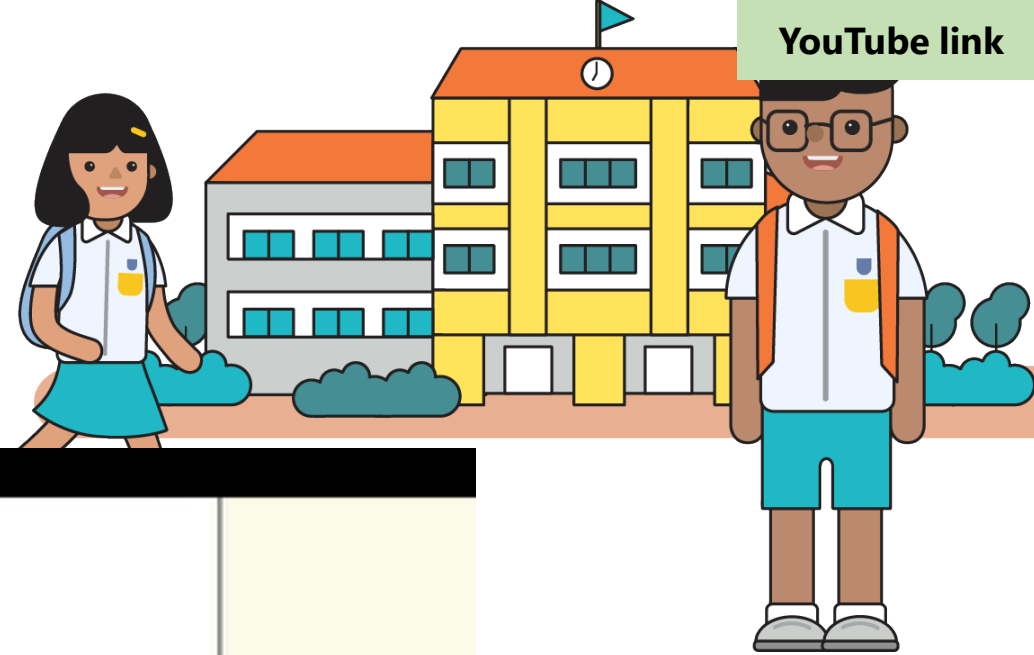
Example: Secondary school experience under Full SBB



Information presented is accurate as of March 2024

Explainer Video: Secondary school experience under Full SBB

YouTube link





Details of secondary school experience under Full SBB

What does Full SBB mean for my child? (Video)

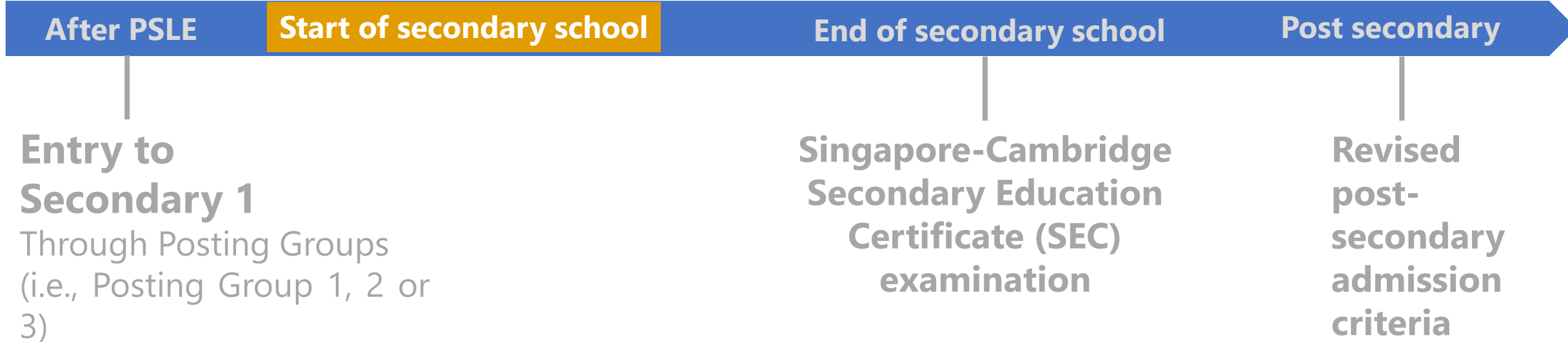


**Implementing
Full Subject-Based Banding
in secondary schools**

Secondary school experience under Full SBB

Secondary school experience

1. Mixed form classes upon entering secondary school
2. Common curriculum subjects at lower secondary
3. Subjects to be offered at G1, G2 or G3, mapped from the standards of the N(T), N(A) and Express respectively
4. Greater flexibility to offer subjects at various subject levels
5. Shift away from stream-based subject offerings



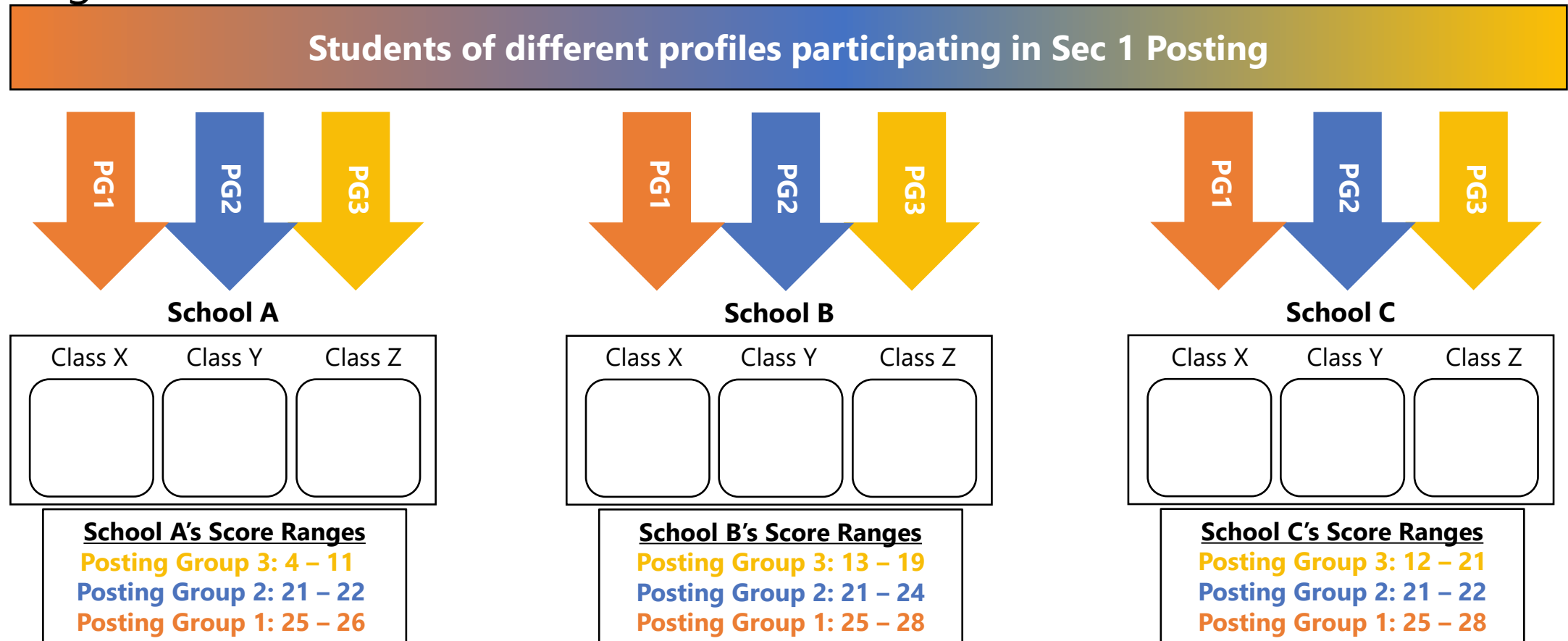
Posting Groups and Subject Levels

- Students will be posted to Secondary 1 through **three Posting Groups – Posting Group 1, 2, and 3.**
- **Posting Groups will only be used for:**
 - Facilitating entry into secondary school.
 - Guiding the subject levels students take at the start of Secondary 1.
 - They do not define students' identities, nor influence learning experiences and access to post-secondary pathways.

PSLE Score	Posting Groups	Indicative level of most subjects at start of Secondary 1
4 – 20	3	G3
21 - 22	2 or 3	G2 or G3
23 - 24	2	G2
25	1 or 2	G1 or G2
26 – 30 (with AL 7 or better in EL and MA)	1	G1

Mixed Form Classes in Lower Secondary

- With Full SBB, students will be placed in mixed form classes in lower secondary.
- More opportunities for students to interact with other students of different strengths.



Mixed Form Classes in Lower Secondary @ Northbrooks

Form Class

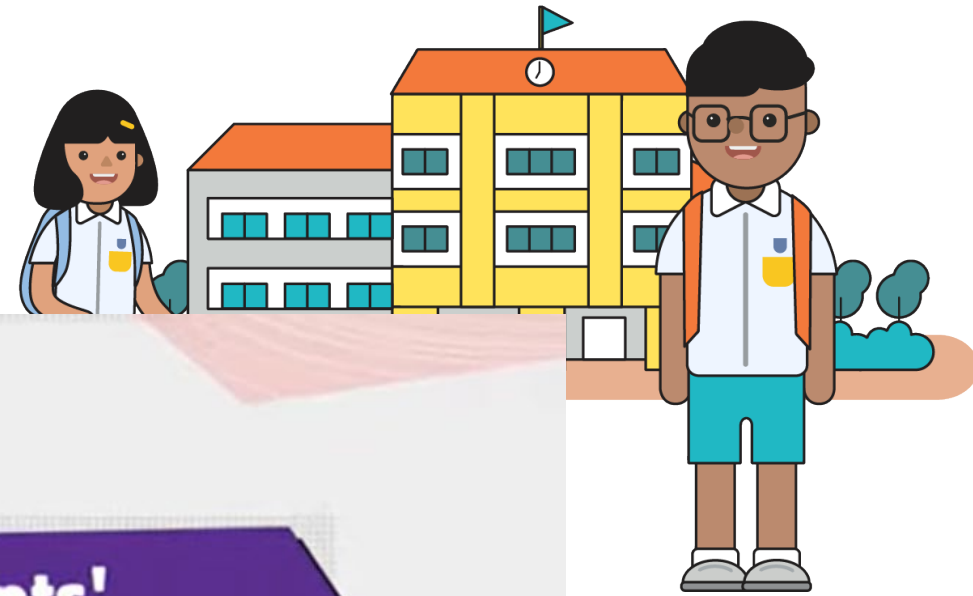
- Comprises students from all 3 Posting Groups (PG1, PG2 & PG3)
- 6 Common Curriculum subjects: Art, D&T, FCE, CCE, Music and PE
- Mixed ability classes with students of diverse strengths and interests
- A valuable setting for students from diverse backgrounds and abilities to work together as a family, build meaningful friendships and appreciate each other's strengths which will benefit them in life
- Peer support system within the class, where students provide mutual support to one another

DI and EdTech
+ PLDs (iPads)
employed as
strategies and
tools for
effective
engagement

Learning Group

- Comprises students taking the subject at the same subject level, i.e. G1, G2 or G3
- Students are grouped together by similar strengths/ability in EL, MTL, Math, Science (based on MOE-criteria)
- Student taking G1 and G2 Humanities subject may be offered Humanities subjects at a more demanding level from Secondary 2
- Cater to student strengths and abilities, where students learn at a more appropriate pacing and pitching for the year

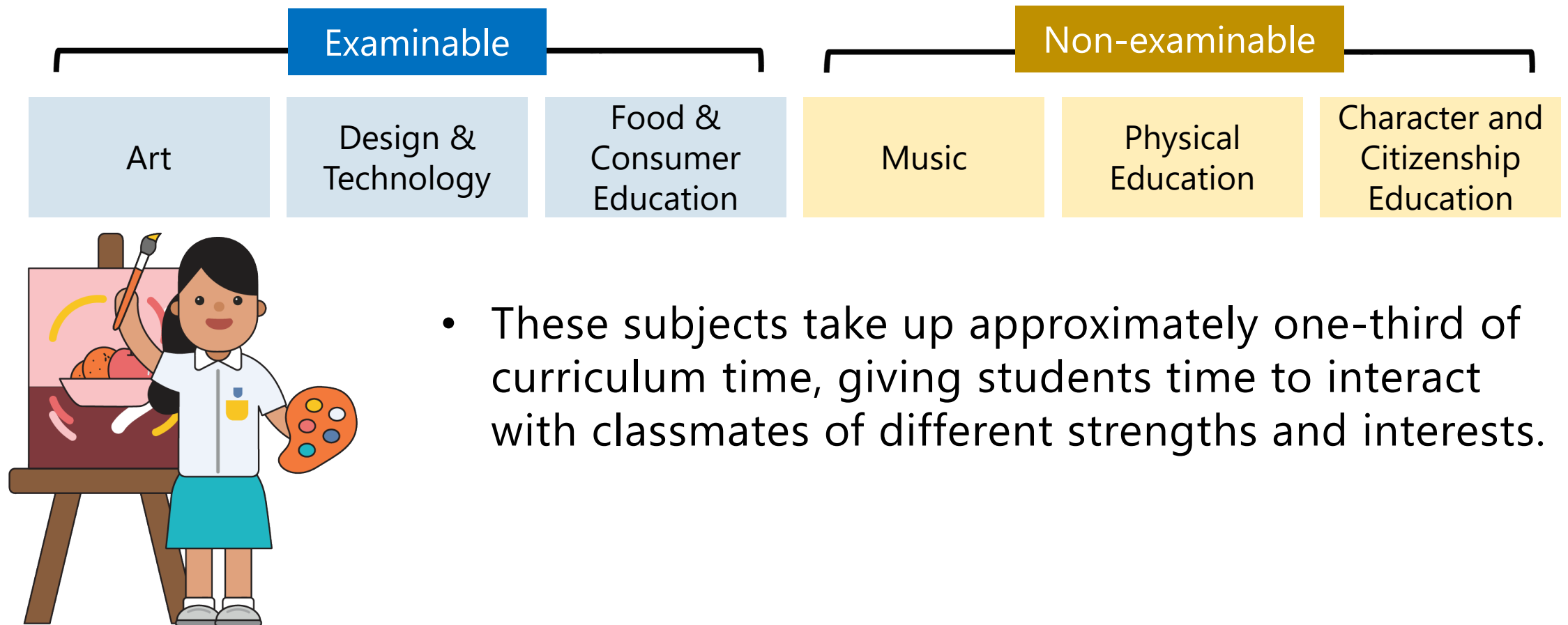
Video: Mixed Form Classes



**Catering to students'
diverse strengths and
learning needs under Full SBB**

Common Curriculum Subjects

- Students will take six common curriculum subjects with their form class classmates:



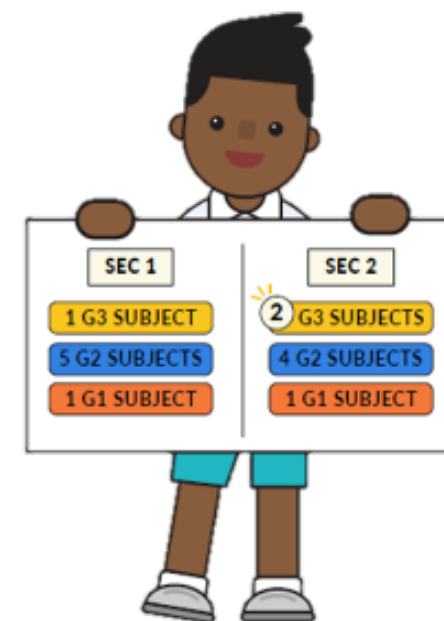
Subject Levels under Full SBB

- Students can take different subjects at different subject levels (i.e., G1, G2 or G3) according to their strengths, interests and learning needs, throughout their secondary school journey.
- These subject levels, G1, G2 or G3, are mapped from the standards of N(T), N(A) and Express subject levels respectively.

Subject Levels under Full SBB

- Students are required to take compulsory subjects at G1, G2 or G3.
- Subject level at the start of Secondary 1 is based on their PSLE Score and indicated by Posting Groups.

PSLE Score	Posting Groups	Indicative level for most subjects at start of Secondary 1
4 – 20	PG3	G3
21 - 22	PG2 or PG3	G2 or G3
23 - 24	PG2	G2
25	PG1 or PG2	G1 or G2
26 – 30 (with AL 7 or better in EL and MA)	PG1	G1



Taking Subjects at More Demanding Levels



- For **English Language, Mother Tongue Languages, Mathematics and/or Science**, students can take them at the start of Secondary 1 at a more demanding level if they meet the eligibility criteria.

Eligibility criteria for <u>English Language, Mathematics, Science, Mother Tongue Languages</u>				Eligibility criteria for <u>Higher Mother Tongue Languages</u> (from 2026 Sec 1 cohort onwards)
Posting Group	PSLE Standard grade	PSLE Foundation grade	Option to offer subject at	
PG2	AL 5 or better	-	G3	AL 1/AL 2 in Mother Tongue Language; <u>or</u> Distinction/Merit in Higher Mother Tongue Language
PG1	AL 5 or better	-	G2 / G3	
	AL 6	AL A	G2	

- Students can take **Humanities subjects** at a more demanding level from Secondary 2 onwards, based on their results in Secondary 1.

Taking Subjects at Less Demanding Levels



- Eligible students may take some subjects at a less demanding level from Secondary 1.
- Students who take subjects at a less demanding level may subsequently take the subject at a more demanding level as they gain greater competence and confidence in the subject.

Taking Subjects at Less Demanding Levels

- Students can initiate their interest to take subjects at a less demanding level based on the following considerations:

Mother Tongue Languages:

Indicative level of most subjects at start of Secondary 1	PSLE Grade (Standard Mother Tongue Language)	PSLE Grade (Foundation Mother Tongue Language)	Option to offer at
G3	AL 6	AL A	G2
	AL 7-8	AL B-C	G1 or G2
G2	AL 7-8	AL B-C	G1

English Language, Mathematics and/or Science:

Indicative level of most subjects at start of Secondary 1	PSLE subject level for English Language, Mathematics and/or Science	Option to offer at
G3	Foundation level	G2

Subject Level Flexibility Throughout Secondary Education

- Beyond the start of Secondary 1, students may adjust their subject levels across their secondary school journey. Teachers' recommendation on a student's ability to cope with the higher academic demands will be considered as part of a holistic assessment of student's readiness to take the subject(s) at a more demanding level.

Offering periods	Current Subject Level	Subjects	School-based Results	Option to offer subject starting from the next semester
End of Sec 1 Semester 1 & 2	G1	EL, MTL, MA and SCI	75% or higher in the specific subject	G2
	G2			G3
End of Sec 1 Semester 2	G1	Humanities subjects (Geography, History, Literature)	≥75% overall in G1 English Language (or ≥50% overall in G2 English Language); AND A Pass with Distinction grade for both G1 Humanities (Social Studies component) Performance Tasks in Semesters 1 and 2.	G2
	G2		75% or higher in the specific subject	G3

Lower Secondary Subject Offerings @ Northbrooks

Examinable subjects	G1	G2	G3	Common Curriculum
English Language	✓	✓	✓	
Chinese/ Malay Language	✓	✓	✓	
Higher Chinese/ Malay Language			✓	
Mathematics	✓	✓	✓	
Science	✓	✓	✓	
Humanities (Geography)	✓	✓	✓	
Humanities (History)	✓	✓	✓	
Humanities (Literature in English)	✓	✓	✓	
Art				✓
Design and Technology				✓
Food & Consumer Education				✓
Non-examinable subjects	G1	G2	G3	Common Curriculum
Character and Citizenship Education				✓
G1 Humanities	✓			
Physical Education				✓
Music				✓

Progression to Secondary 2

- All students will generally progress to Secondary 2.
 - Teachers will check in with students and parents to discuss the subjects and respective subject levels that best suit the student.
- Students can take certain subjects at a more demanding level based on his/her interest and learning progress.



What's next?



Secondary 1 & 2

End of Secondary 2

Secondary 3 & 4

Deciding on upper secondary subject combinations

All students will take between 7 examinable subjects for upper secondary.

Upper secondary

Students will continue to have flexibility to take subjects at different subject levels, including elective subjects (e.g. Additional Mathematics, Art, Design & Technology).

What's next?

End of Secondary 4/5

Singapore-Cambridge Secondary Education Certificate (SEC) Examination

From 2027, students will sit for the new SEC examinations, with different papers for each subject level.

5th year of secondary education will continue to be available for eligible students.

- This allows them to pace their learning and possibly take subjects at a more demanding level to access more post-secondary pathways.

Post-Secondary

Admission to post-secondary education institutes

Admission criteria have been progressively updated to recognise students taking different combinations of subjects and subject levels.

- E.g., Polytechnic Foundation Programme (PFP) has been expanded to allow access to students offering G3 subjects, or a mix of G2 and G3 subjects.

Singapore-Cambridge Secondary Education Certificate (SEC)

- From 2027, students will sit for the new SEC examinations, comprising different papers for each subject level.
 - Students will be offering the Full SBB equivalent of retired subjects (e.g. G1 Computing instead of CPA).
- SEC examination timetable will be harmonised to allow students to better pace their learning with all students taking their examinations in the same period
- Written examinations for English and Mother Tongue Language (MTL) will be conducted ~1 month ahead of other subjects, with only one sitting for MTL



Overview of Post-Secondary Pathways

**From 2028,
more post-secondary options
will be available.**

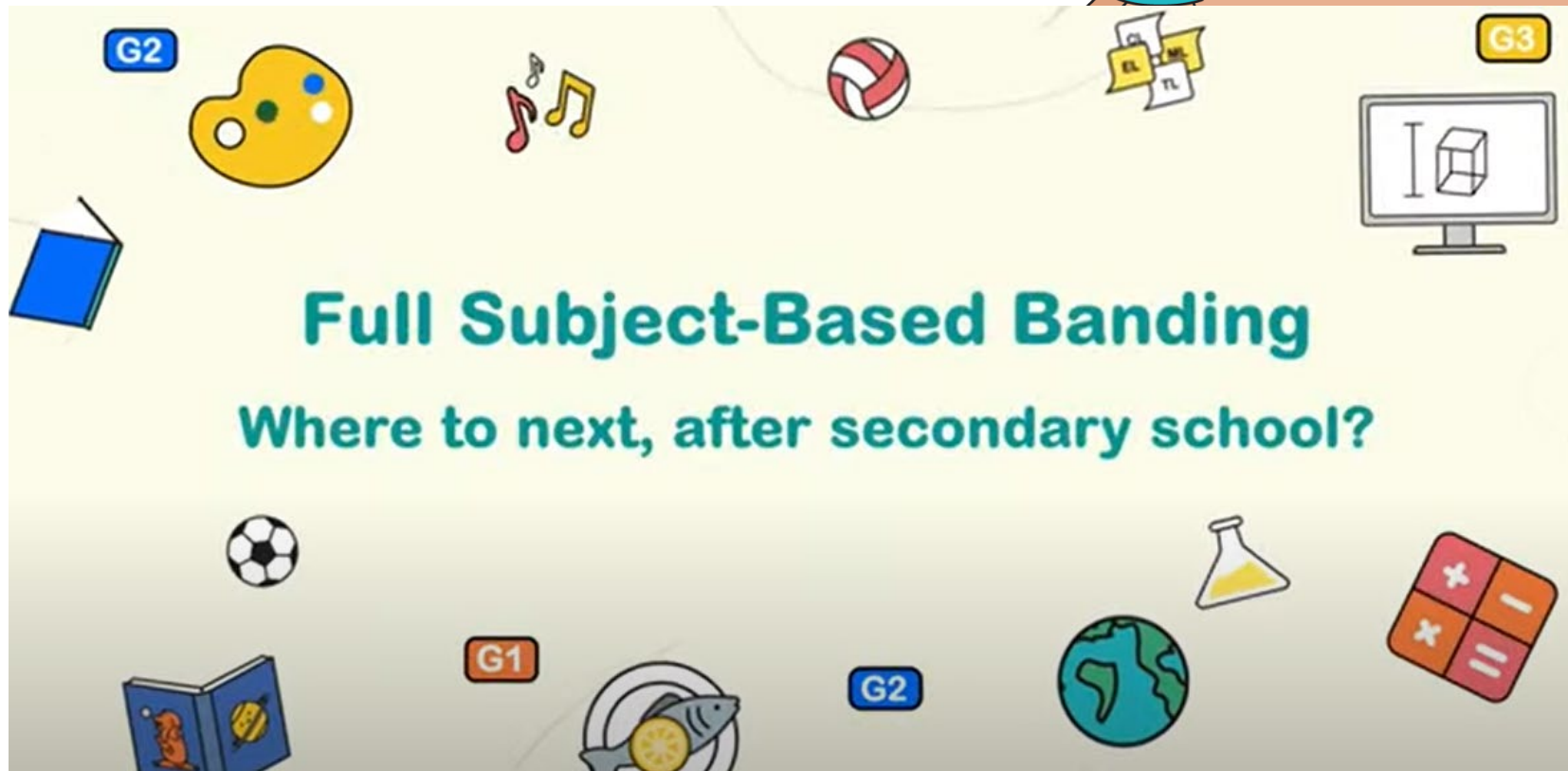
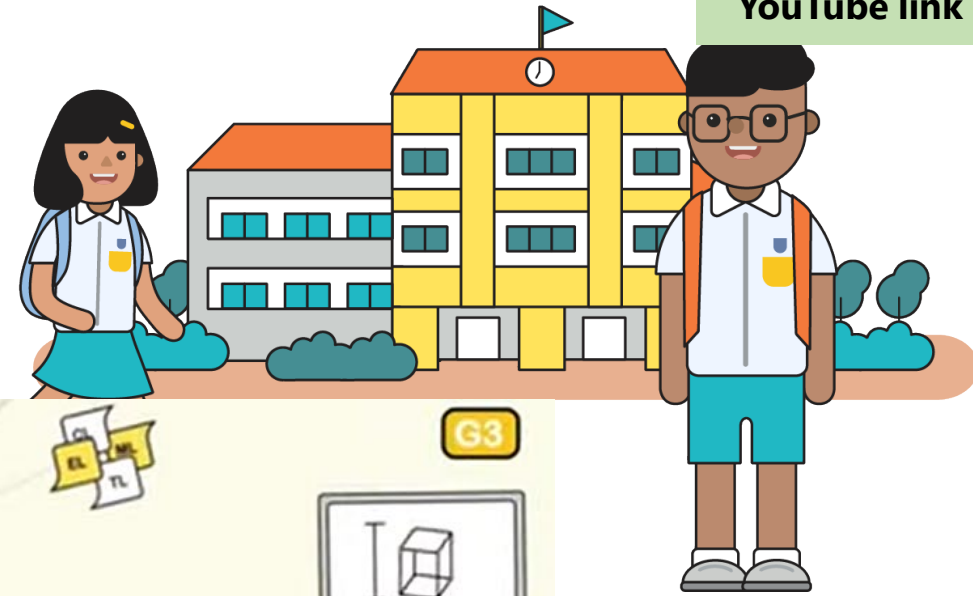
Students taking at least	POST-SEC PATHWAYS					
	ITE Year 1 Entry	ITE Year 2 Entry	Polytechnic Foundation Programme (PFP)	Polytechnic Year 1	Millennia Institute	Junior College
6 G3 subjects	✓	✓	NEW ✓	✓	✓	✓
5 G3 subjects	✓	✓	NEW ✓	✓	✓	NEW ✓
4 G3 + 1 G2 subjects subject	✓	✓	NEW ✓	NEW ✓		
5 G2 subjects	✓	✓	✓			
4 G1 subjects	✓	NEW* ✓				

*For students who meet ITE's Year 1 academic requirements



Explainer Video: Post-Secondary Pathways

YouTube link





Find out more about Full SBB

Visit the Full SBB Microsite

<https://go.gov.sg/moe-fsbb>



What is Full SBB?

Full SBB is part of MOE's ongoing efforts to nurture the joy of learning and develop multiple pathways to cater to the different strengths and interests of our students.



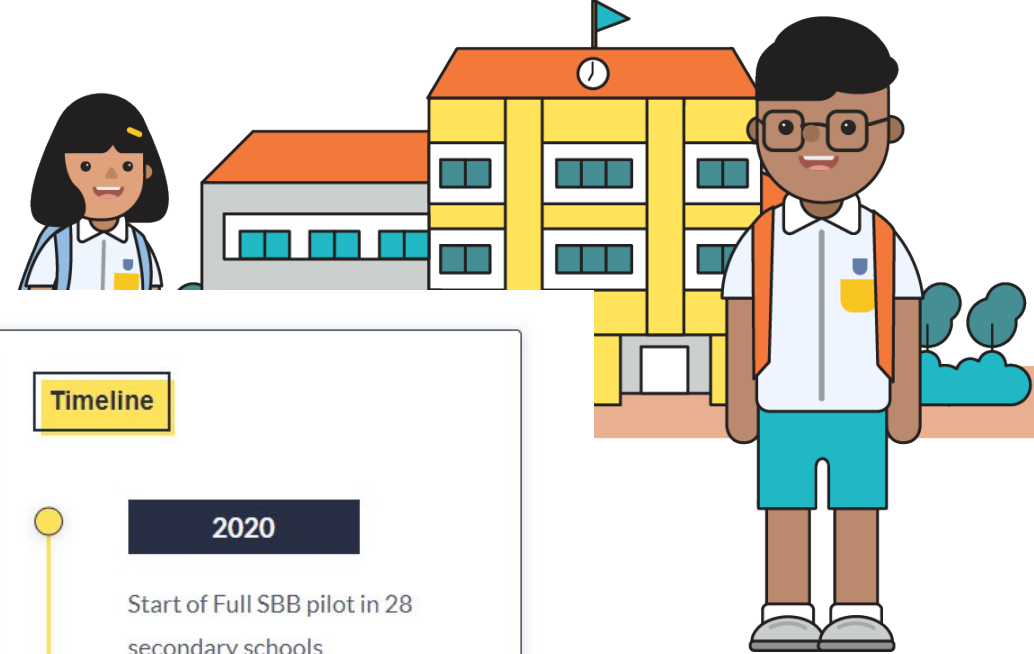
Secondary school experience under Full SBB

Find out more about Secondary 1 postings, form classes, subject offerings, Common Curriculum and other changes under Full SBB.



FAQ

Read this list of commonly asked questions and answers on Full SBB.



Timeline

2020

Start of Full SBB pilot in 28 secondary schools

2021

First cohort of Primary 6 students undergo new PSLE scoring and Secondary 1 (S1) posting system

2022-2024

Progressive roll-out of Full SBB to more secondary schools

2027

Find out more about Full SBB

Microsite



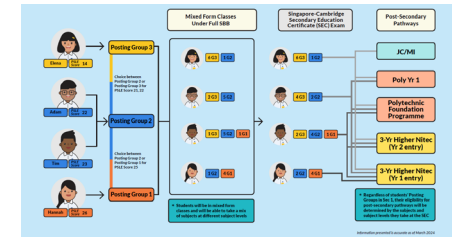
<https://go.gov.sg/moe-fsbb>

Interactive Site (updated Mar 2024)



<https://go.gov.sg/my-fsbb-path>

Infographic (updated Mar 2024)



<https://go.gov.sg/fsbb-pathways>

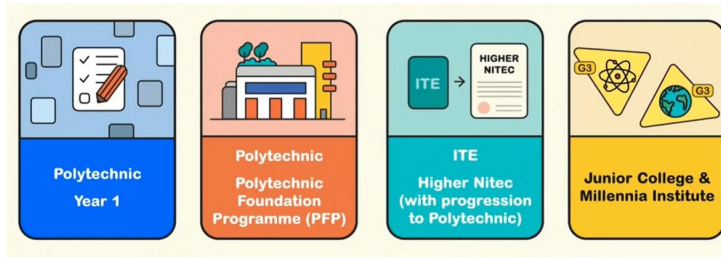
Find out more about Full SBB

MOE Explainer Video: Full SBB



<https://go.gov.sg/moe-fsbb-explainer>

MOE Explainer Video: Post-Secondary Pathways under Full SBB



<https://go.gov.sg/moe-fsbb-postsec>



Thank you