

The Personal Learning Device (PLD) Initiative

Briefing for Parents

A PRESENTATION BY
MINISTRY OF EDUCATION, SINGAPORE



Overview of Briefing

- National Digital Learning Programme (NDLP)
- Learning @ Northbrooks Secondary School
- Supporting Safe and Effective Use
- Device and Funding
- Key Dates to Remember



The National Digital Literacy Programme and the PLD Initiative

An Overview

The National Digital Literacy Programme (NDLP)

1. The NDLP was launched in March 2020 to help students **strengthen their digital literacy and acquire digital skills** needed to navigate an increasingly digitalised world.
2. Under the NDLP, every secondary school student will **own a school-prescribed Personal Learning Device (PLD)**. Students may use funds from their Edusave Account to pay for the PLD.

Learning with a PLD

Northbrooks Secondary School

Enhanced Learning through Personal Learning Device @ Northbrooks

LEARNING WITH A PLD

At Northbrooks Secondary School, your child/ward will be using the PLD for...

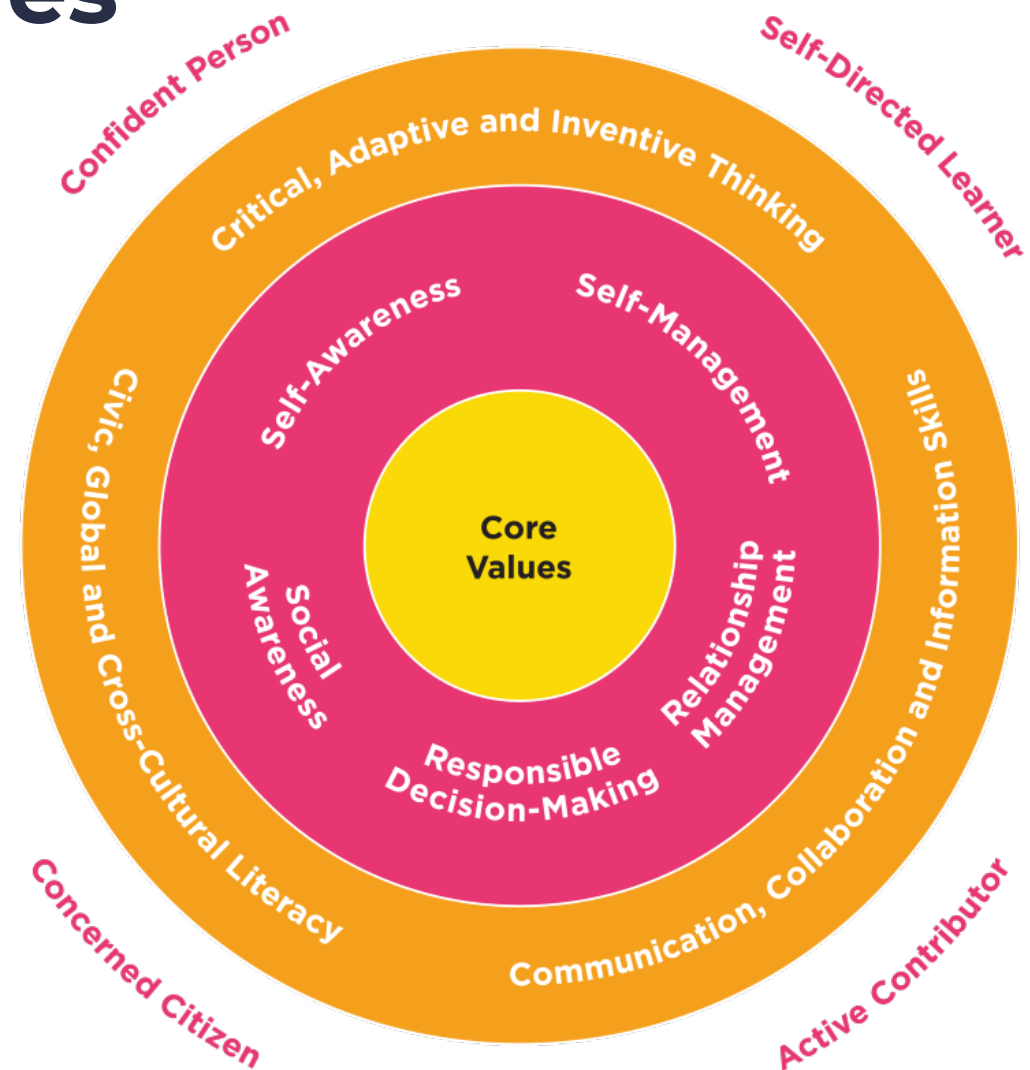
- Individual/Group work during classroom lessons
- Self-Directed Learning
- Collaborative Learning
- Blended Learning
- Project work

THE NATIONAL DIGITAL LITERACY PROGRAMME AND PLD INITIATIVE

21st Century Competencies

Globalisation, changing demographics and technological advancements are some of the key driving forces of our current times, and they will continue to shape our future.

Our students will have to be prepared to face these challenges and seize new and exciting opportunities. Technology integration can be harnessed to foster effective learning.



Transforming Education Through Technology (EdTech) Masterplan 2030

Nine Digital Competencies

The 9 digital competencies are described below:

1. Digital Safety & Security

Understanding of online behaviour and awareness of how to protect oneself in the online space

2. Digital Responsibility

When navigating the online space, demonstrate respect for oneself and others, and practise safe, responsible, and ethical use

3. Digital Knowledge Currency

Keep up-to-date with technological developments and the use of digital resources, as part of learning for life

4. Computational Thinking

Employ computational thinking together with technological tools to solve problems, e.g. when developing and testing solutions

5. Digital Info Management

Employ effective strategies to locate information and resources, and exercise discernment by evaluating the accuracy, credibility, and relevance of information. Distil and synthesise essential content from the often large amount of information available online

6. Digital Communication, Collaboration & Participation

Leverage digital platforms and tools to communicate ideas, connect with others, and contribute constructively to a common goal

7. Data Competencies

Read, understand, interpret, manipulate, analyse, and present data in meaningful ways

8. Device & Software Operations

Understand how devices and software work in order to use them effectively and productively

9. Coding & Programming

Utilise a variety of digital methods such as block-based programming, text-based programming, or prompt engineering to create digital artefacts, or to develop, test and debug solutions

LEARNING WITH A PLD

Intended Outcomes of the PLD Initiative

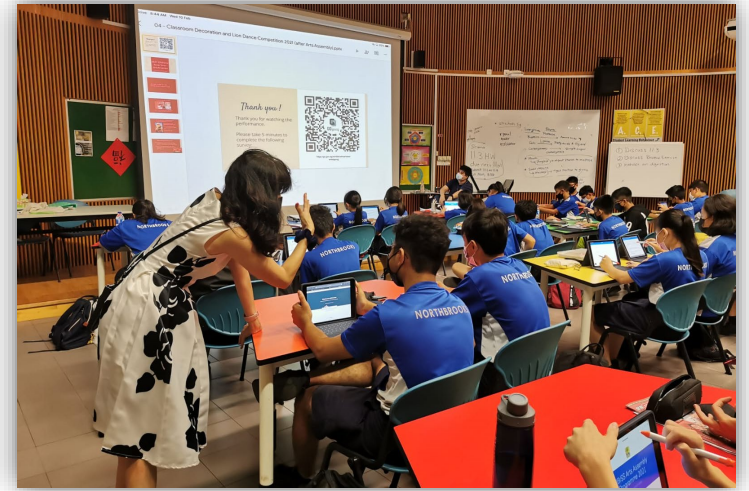
The use of the PLD for teaching and learning aims to:



**Support the
Development of
Digital Literacy**



**Support
Self-Directed and
Collaborative Learning**



**Enhance
Teaching and Learning**

**Supporting Students in the Safe
and Effective Use of the Devices**

Supporting Students in the Safe and Effective Use of the Devices

Supporting Safe and Effective Use of PLD

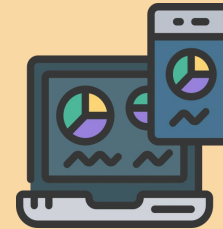
MOE has put in place measures to provide students with a safer digital learning environment:



**Cyber Wellness
Education**



**School-Based Learning
Routines**



**Device
Management
Application (DMA)**

SAFE AND EFFECTIVE USE OF DEVICES

Cyber Wellness Concerns Identified by International Studies



Harmful Online Content

50% of Singaporean teenagers are exposed to cyber threats and 28% of them are exposed to violent content.

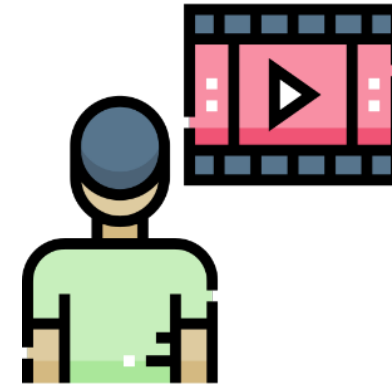
(COSI, 2020)



Distraction from Learning

72% of teens feel compelled to immediately respond to texts, social posts and notifications.

(Kimball & Cohen, 2019)



Excessive Screen Time

Teens who don't sleep enough report higher levels of depressive symptoms than well-rested peers (31% vs. 12%).

(Kimball & Cohen, 2019)

SAFE AND EFFECTIVE USE OF DEVICES

Supporting Students in the Safe and Effective Use of the Devices

The school has measures in place to enable a safer digital environment for learning with the use of PLDs, e.g.

- School rules on digital device use
- Classroom management and routines
- Educating students on Cyber Wellness
- Partnering parents/guardians to ensure that students are well-supported in their use of technology for learning
- Device Management Application (DMA) to support a safer digital environment for learning



SAFE AND EFFECTIVE USE OF DEVICES

Cyber Wellness Education in CCE

Educating students on Cyber Wellness

MOE has made significant changes to the Character and Citizenship Education (CCE) curriculum.

Cyber Wellness lessons will feature significantly in these lessons.

Throughout their Secondary School education, students will learn about:

- Balanced use and self control
- Cyber bullying and Upstanding
- How to be a positive influence online
- How to handle online falsehoods
- How to manage social media (peer influence, emotions, echo chambers)
- Online relationship and Online safety (grooming, self disclosure)
- To respect intellectual property rights

SAFE AND EFFECTIVE USE OF DEVICES

Parents'/Guardians' Role

- We would like to partner parents/guardians so that that students are well supported in their use of technology for learning.
- As parents/guardians, you can help in the following ways:
 - Model good digital habits for your child/ward e.g. parents/guardians not using devices during family meals.
 - Know your child/ward well, and have conversations with your child/ward about safe and responsible use of technology.
 - Discuss and come up with ground rules for internet/device usage that both your child/ward and you can agree with.
 - Encourage your child/ward to use productivity tools using his/her PLD, to organise information and simplify tasks for efficiency.



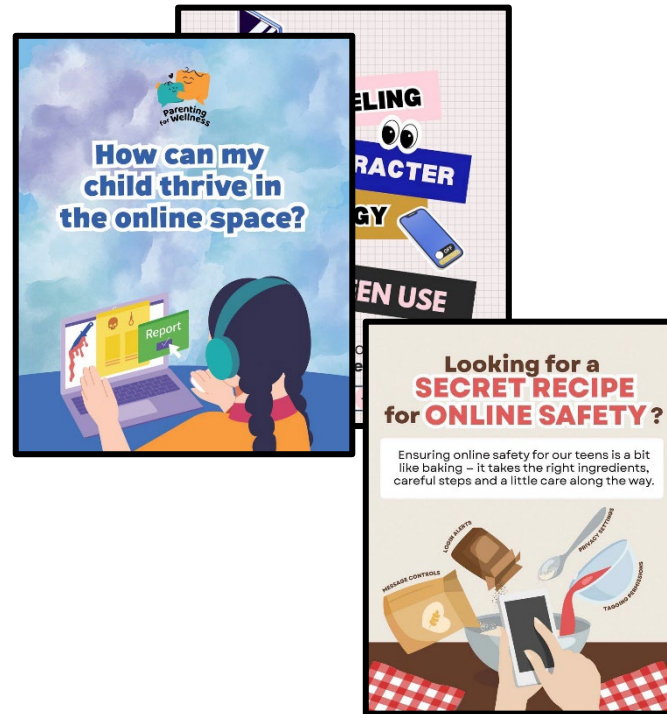
Supporting Resources

Here are some resources that you can refer to:

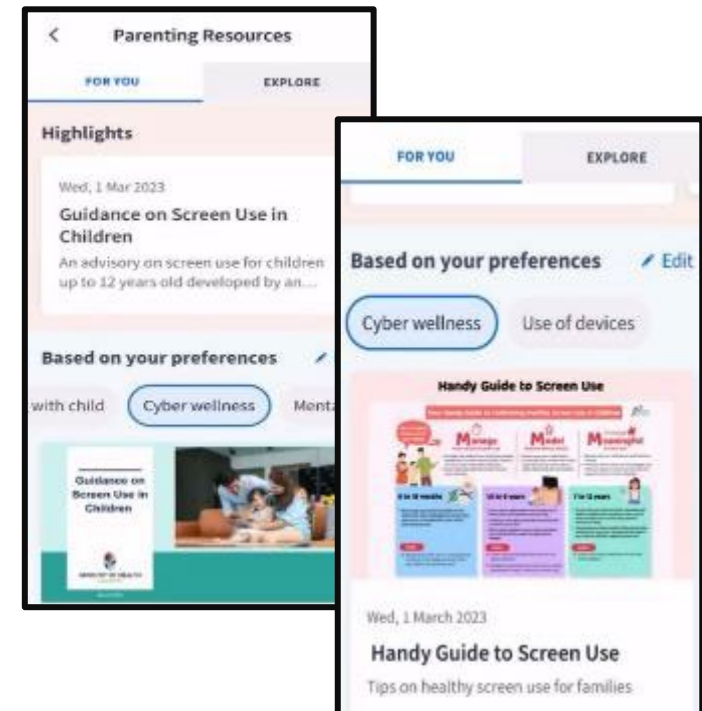
A. Parent Kit



B. Bite-sized tips and advice via Parentingwith.MOEsg Instagram page



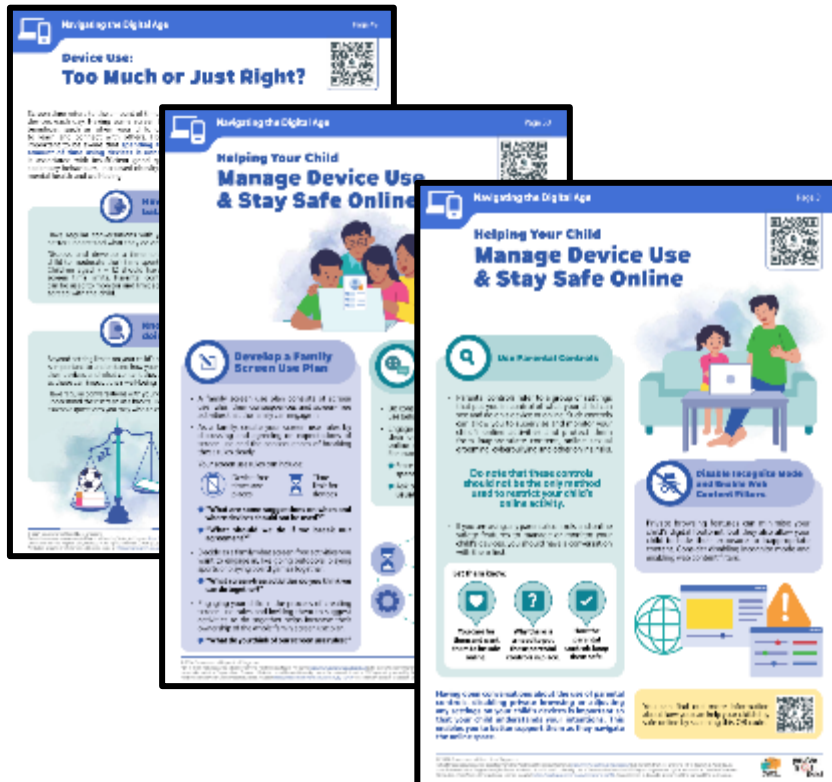
C. Resources from MOE and other agencies (available on resources repository in Parents Gateway)



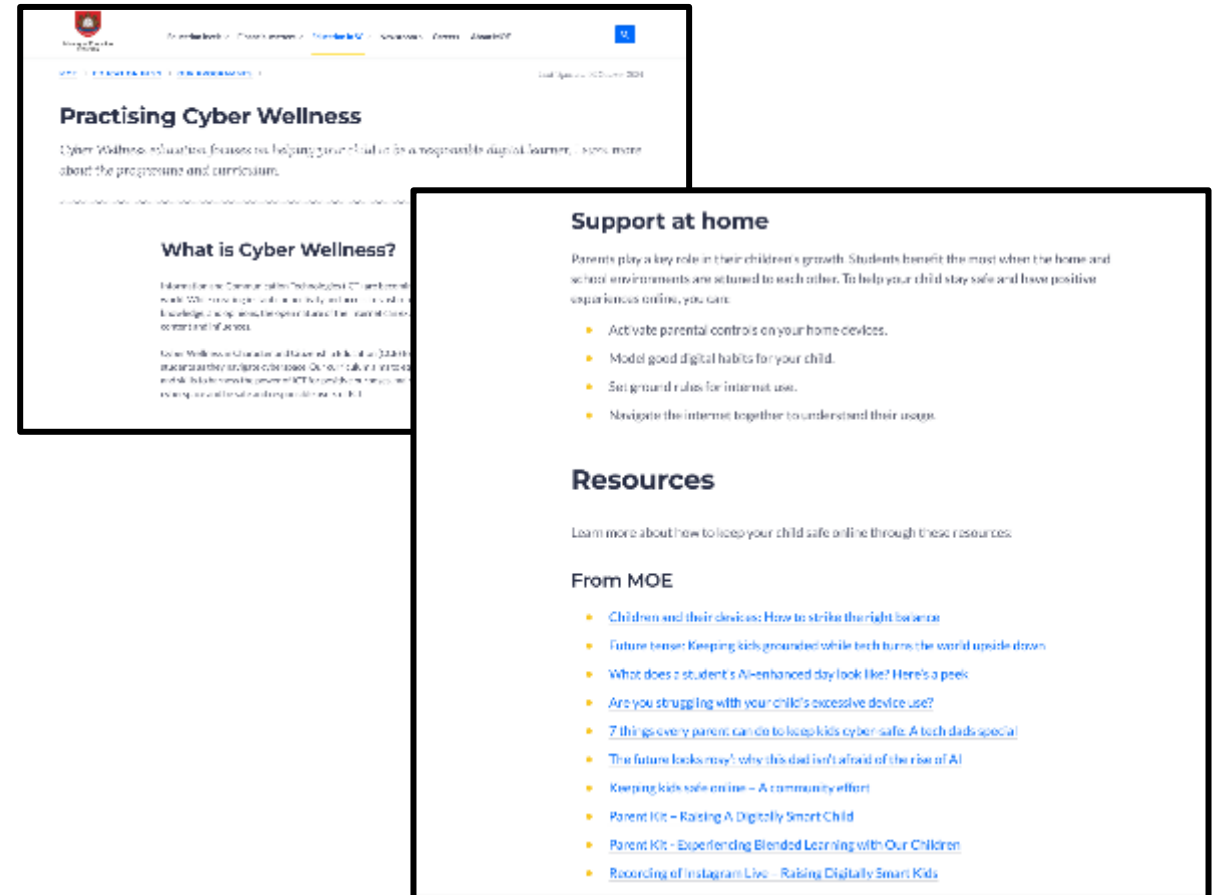
Supporting Resources

D. Parenting for Wellness Toolbox for Parents and Parenting for Wellness Website on Parent Hub

The Parenting for Wellness initiative provides bite-sized resources (practical tips and strategies) on building strong parent-child relationships, supporting your child's mental well-being and parenting in the digital age.



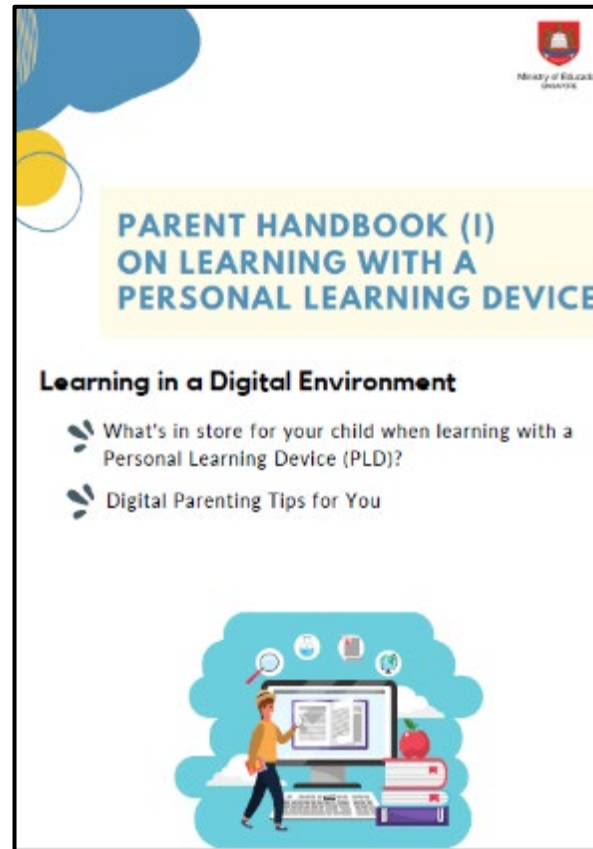
E. More resources are available via the MOE Cyber Wellness Webpage



Supporting Resources

F. Parent Handbooks (I) and (II) on Learning with a Personal Learning Device

These Handbooks provide tips on supporting your child in the use of PLDs for learning and are shared via the PG notification together with the letter to purchase PLDs.



Role of the MOE Device Management Application (DMA) in Providing a Safer Digital Environment for Learning

PROVIDING A SAFER DIGITAL ENVIRONMENT FOR LEARNING

MOE DMA Installation

- The MOE DMA solution for iPad, Jamf, is an app that will be installed on all students' PLDs to support their safe and responsible use of devices.
- The DMA will be funded by MOE.
- The installation of the MOE DMA applies to both devices purchased through the school and any student-owned devices that parents/guardians opt for the student to use instead of the school-prescribed PLD.
- The MOE DMA will be installed after the collection of the device. Students will be guided on the installation.
- The MOE DMA will be uninstalled from the device when students graduate or leave the school.

PROVIDING A SAFER DIGITAL ENVIRONMENT FOR LEARNING

In-School DMA Settings (Default)

Schools will determine DMA settings for **in-school use**. As a default, these settings will continue to be in place after school as well:

- MOE and the school will set the level of web content filtering, including filtering out objectionable content or content that may not be conducive to teaching and learning (e.g. social media, pornography, gambling, or websites containing extremist content)
- The school will determine the apps and programmes to be installed to support teaching and learning.

PROVIDING A SAFER DIGITAL ENVIRONMENT FOR LEARNING

After-School DMA Parent Options

- 1. After-School DMA Parent Options provide parents with the flexibility in managing your child’s/ward’s use of PLD after school hours.
- 2. The following tables outline the different levels of restrictions, controls, and monitoring for each After-School DMA Parent Option.

Default	Option A	Option B
In-school DMA settings will continue after school hours	DMA settings can be modified by Parents/Guardians after school hours	DMA will be inactive* after school hours
For parents/guardians who want their child’s/ward’s use of the device to be restricted only to teaching and learning, and prefer to leave it to the school to decide on DMA settings after school hours.	For parents/guardians who prefer to take charge of the level of restrictions for their child’s/ward’s use of the device after school hours regulated by the DMA.	For parents/guardians who do not want their child’s/ward’s use of the device after school hours to be regulated by the DMA at all.

*No data will be collected after school hours when the DMA is inactive.

- Having default school settings continue after school hours is the best option for parents/guardians who prefer not to, or do not feel ready to manage their child’s/ward’s device use on their own.
- Parents/guardians can request to change their choice of DMA settings, which is the existing practice.

PROVIDING A SAFER DIGITAL ENVIRONMENT FOR LEARNING

After-School DMA Parent Options

	Default Setting (This will apply if no Alternative Setting is chosen)	Alternative Setting: Option A (DMA settings can be modified from the Default settings in place)	Alternative Setting: Option B (DMA will be inactive only after school hours)
Protect students from objectionable content	Web content filtering will include, and not limited to, the following categories: <ul style="list-style-type: none">• Violent/extremist content• Sexual/pornographic content• Gambling-related content• Suicide/self-harm content• Cyberbullying content• Content endangering public health	Parents/Guardians will be able to include additional web content filtering using the Jamf Parent app. However, parents/guardians cannot allow access to web content that is filtered out under the Default Setting.	No content filtering at all after school hours.

PROVIDING A SAFER DIGITAL ENVIRONMENT FOR LEARNING

After-School DMA Parent Options

	Default Setting (This will apply if no Alternative Setting is chosen)	Alternative Setting: Option A (DMA settings can be modified from the Default settings in place)	Alternative Setting: Option B (DMA will be inactive only after school hours)
Reduce distractions from learning through control of applications	Parents/Guardians will <u>not</u> be able to install additional applications.	<p>Parents/Guardians will be able to install additional applications after school hours by signing in to the Apple App Store using their personal Apple Accounts.</p> <p>Applications installed by parents/guardians/students will not be accessible during school hours.</p> <p>Parents/Guardians can limit after school access to applications that they install on the PLD.</p>	<p>Parents/Guardians/Students will be able to install additional applications after school hours by signing in to the Apple App Store using their personal Apple Accounts.</p> <p>Applications installed by parents/guardians/students will not be accessible during school hours.</p>

PROVIDING A SAFER DIGITAL ENVIRONMENT FOR LEARNING

After-School DMA Parent Options

	Default Setting (This will apply if no Alternative Setting is chosen)	Alternative Setting: Option A (DMA settings can be modified from the Default settings in place)	Alternative Setting: Option B (DMA will be inactive only after school hours)
Limit screen time	The school will define the specific hours during which the student can use the device.	Parents/Guardians can modify the amount of screen time for their child/ward by setting the PLD sleep hours to any time between 6.30pm and 10:30pm. This can be done on the Jamf Parent Application. ² Parents/Guardians can determine the duration of use of specified applications.	No limitation on duration of screen time. after school hours. Sleep hours are not enforced. ³

PROVIDING A SAFER DIGITAL ENVIRONMENT FOR LEARNING

After-School DMA Parent Options

	Default Setting (This will apply if no Alternative Setting is chosen)	Alternative Setting: Option A (DMA settings can be modified from the Default settings in place)	Alternative Setting: Option B (DMA will be inactive only after school hours)
Monitor students' cyber activities	Parents/Guardians will not be able to track their child's/ward's web browsing history due to Apple's Privacy Policy.		
Provision of Parent Account	X	✓	X

PROVIDING A SAFER DIGITAL ENVIRONMENT FOR LEARNING

Support for Parents/Guardians

Parents/guardians may wish to consider the following questions to decide the After-School DMA Parent Option that best suits your child/ward.



A. Child's/ward's current device usage habits

- How much time does my child/ward spend on their device?
- How well is my child/ward able to regulate their device usage on their own?
- Does my child/ward get easily distracted while doing online learning?



B. Parents'/Guardians' involvement

- How confident and familiar am I with managing my child's/ward's cyber wellness?
- Are there existing routines and open conversations on the use of the Internet at home?
- Am I aware of how to prevent different types of cyber threats that my child/ward might face?



PROVIDING A SAFER DIGITAL ENVIRONMENT FOR LEARNING

Data Security

- All user data collected through the MOE DMA will be stored in secure servers managed by appointed DMA Vendors with stringent access controls and audit trails implemented.
- Data such as device information, email address of students and parents, device information will be deleted when the student graduates or leaves school. Website URLs accessed by students will be deleted at the end of each term.
- The MOE DMA solutions used are cloud-based Software-as-a-Service (SaaS) solutions and are trusted solutions that have been operating for many years. They have also been subject to regular security reviews and assessments by independent reviewers.

PROVIDING A SAFER DIGITAL ENVIRONMENT FOR LEARNING

Data Security

- MOE DMA solutions have sufficient security robustness to ensure that the data collected is properly stored and protected. MOE will also subject the DMA Vendors to regular security system audits based on tender requirements.
- To prevent unauthorised access, DMA Administrators and DMA Vendors will be required to access their accounts using 2-factor authentication or the equivalent to ensure proper accountability for information access and other activities performed. There will be regular account reviews and audits for DMA Administrators' and DMA Vendors' accounts.

PROVIDING A SAFER DIGITAL ENVIRONMENT FOR LEARNING

Data Collected by the DMA

1. The MOE DMA does NOT collect any of the following data:
 - Login IDs and passwords entered into websites or into any applications
 - Actions performed (e.g., posts, online comments, items added to a shopping cart, etc.) when visiting websites and using apps
 - Documents and photos stored in the PLDs
 - PLD location
 - Webcam videos and microphone recordings
2. Parents may update their personal data (e.g., email addresses, names) by contacting the school, in accordance with the Personal Data and Protection Act (PDPA).

Device Information

DEVICE INFORMATION

Personal Learning Device Bundle



Enhanced Device Bundle

The Enhanced Device Bundle that includes:

- 1) a 11th Gen Apple iPad (11"), 128GB,
- 2) an Apple Pencil (USB-C) for iPad
- 3) a Logitech Rugged Combo 4
- 4) a Matte Screen Protector

* 4-year warranty and 4-year insurance

* 2 repairs or 1 replacement claim

What's Next?

WHAT'S NEXT?

Parental Consent for Procurement

1. Parents can access the **Parental Consent for the Purchase of Personal Learning Device (PLD)** via a **Parents Gateway (PG)** notification* that will be sent to you on **9 Jan 2026**.
2. Parents/Guardians who want to use Edusave funds for the PLD (for Singapore Citizens students only), please access:
<https://go.gov.sg/edusaveformsgso> by **23 Jan** to set up a **PDLP Standing Order** as this was not applicable during primary school.

* Parents/Guardians without access to PG can request for the hardcopy letter via your child's/ward's form teacher.



Standing Order for Use of Edusave Account At Govt / Govt-Aided School (wef June 2025)

Instructions

Do ensure you select the correct school and check the box under point 7.

4. Secondary School / Junior College / Centralised Institute

NORTHBROOKS SECONDARY SCHOOL



5. I wish to use my child's/ward's Edusave account for payment of approved fees. (optional)

☐

Yes

6. I wish to use my child's/ward's Edusave account for payment of local and overseas enrichment programme charges. (optional)

☐

Yes

7. I wish to use my child's/ward's Edusave account for payment of learning device under PDL (optional)

☒

Yes

8. Please enter your Mobile Number for us to contact you for further queries.

8123 4567



WHAT'S NEXT?

For Singapore Citizens (SC) Students

Time Frame	Activity
23 Jan 2026	Submit: <ul style="list-style-type: none">a. consent to PLD purchase via in the PG notification which includes the following:<ul style="list-style-type: none">• Intent to Purchase Personal Learning Device (PLD);• Authorisation Form for the Collection of PLDb. the Standing Order (SO) for the use of Edusave Account via https://go.gov.sg/edusaveformsgso (for Singapore Citizen students only) to set up a PDLP SO. Parents without access to PG can submit their consent via hardcopy.
T1W9/T1W10 (tentative)	Collection of devices by students*

** Subjected to availability of stocks. Confirmed date and details of collection will be shared nearer the date.*



WHAT'S NEXT?

For Permanent Residents / International Students

Time Frame	Activity
23 Jan 2026	Submit Parental Consent for the Purchase of Personal Learning Device (PLD) which includes the following: <ul style="list-style-type: none">• Intent to Purchase Personal Learning Device (PLD);• Authorisation Form for the Collection of PLD Through hardcopy letter
Await school billing	Parent/Guardian to make payment via Giro/PayNow
T1W9/T1W10 (tentative)	Collection of devices by students*

** Subjected to availability of stocks. Confirmed date and details of collection will be shared nearer the date.*

WHAT'S NEXT?

Collection of Devices

Your child/ward will be collecting his/her device in school [Term 1 Week 9/Term 1 Week 10 \(tentative\)](#).

If you would like to personally/have another adult to verify the condition of the device during collection with your child/ward:

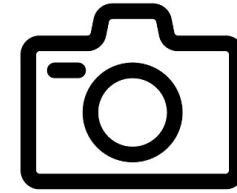
- You may either collect the device personally or appoint an adult proxy to do so **at the vendor's service/collection centre***.
- Your child/ward would need to bring the device to school and arrange for the school's IT department to install the DMA.

Please approach the school for further advice or clarification if you would like to make this arrangement.

* Parents/Guardians (or adult proxy) will **not** be able to collect the PLD from the school.

WHAT'S NEXT?

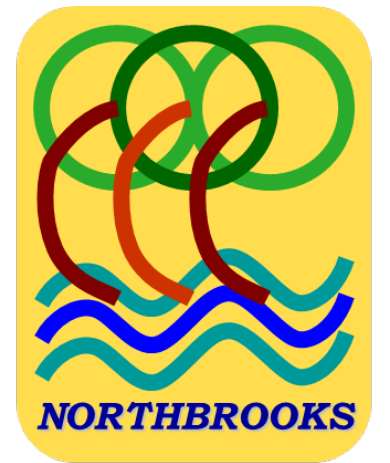
Important Contacts / Helplines



To access / find out more about...	Contact / Helpline
Edusave balance	6260 0777 (official MOE hotline)
Financial assistance	67524311 (school general office)



Thank You



SOARING YET ROOTED